

# AD963FA9 Assembly Guide

Before Assembly:

1. Please check the accessory list before assembly. Contact your local distributor if you find any parts missing.
2. Please read through the installation guide.

## Accessory Package

(1)M2x3 Screw \*3pcs  
P/N: 13MISW00005M11



[for Full size SSD]

(2)M2x6mm(H) screw \*3pcs  
P/N: 13MISW00001M11



[for Half size SSD]

(2)Copper Nut /H: 4.0mm \*3pcs  
P/N: 13MICA00001M05



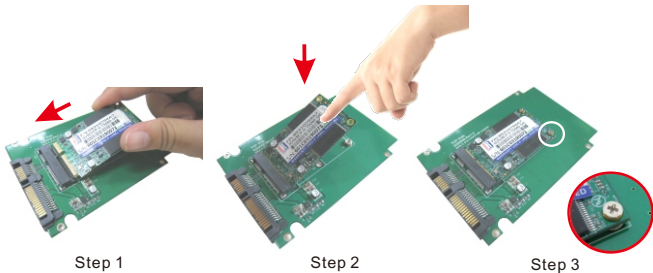
[for Half size SSD]

(3)M2 nut \*3pcs  
P/N: 13MINU00001M11



[for Half size SSD]

The above accessories parts are all have extra 1pc for spare part.



Step 1

Step 2

Step 3

Step 1. insert mSATA SSD into mSATA (mini PCI-e) socket.

Step 2. press mSATA SSD down and aim to the copper nuts below.

Step 3. fix mSATA SSD on the adapter with 2pcs of M2\*3 screws.

(If your mSATA SSD is half size form factor, pls use extra 2pcs of copper nuts as stand like mounted ones.)